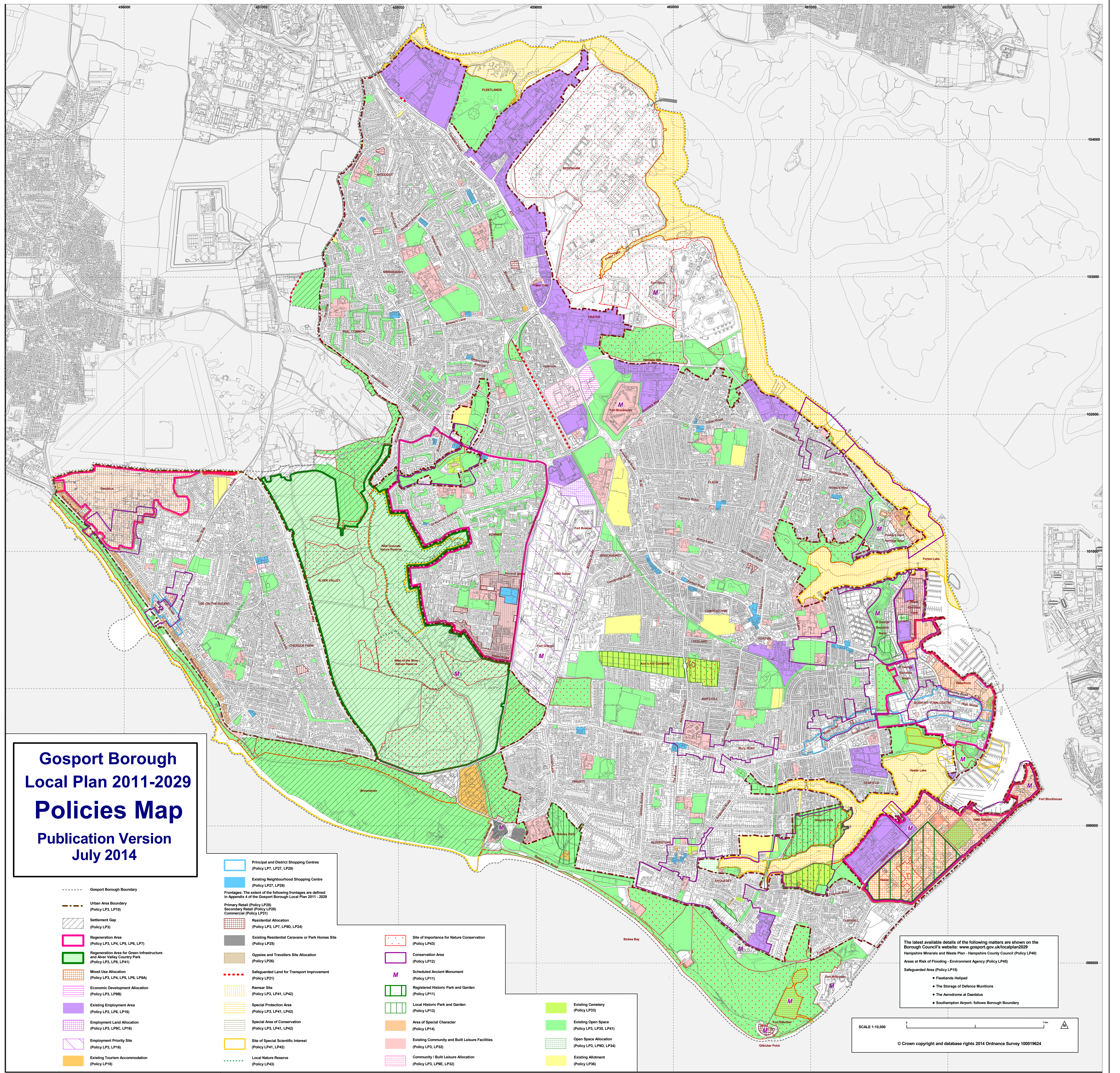


Gosport Borough Local Plan 2011-2029 Policies Map Publication Version July 2014



- | | | | |
|--|--|--|--|
| Gosport Borough Boundary | Principal and District Shopping Centres (Policy LP7, LP27, LP28) | Site of Importance for Nature Conservation (Policy LP43) | Existing Cemetery (Policy LP33) |
| Urban Area Boundary (Policy LP3, LP16) | Existing Neighbourhood Shopping Centre (Policy LP27, LP28) | Conservation Area (Policy LP12) | Existing Open Space (Policy LP3, LP35, LP41) |
| Settlement Gap (Policy LP3) | Frontages: The extent of the following frontages are defined in Appendix 4 of the Gosport Borough Local Plan 2011 - 2029 | Scheduled Ancient Monument (Policy LP11) | Open Space Allocation (Policy LP3, LP90, LP34) |
| Regeneration Area (Policy LP3, LP4, LP5, LP6, LP7) | Primary Retail (Policy LP28) | Registered Historic Park and Garden (Policy LP11) | Existing Allotment (Policy LP36) |
| Regeneration Area for Green Infrastructure and Alver Valley Country Park (Policy LP3, LP6, LP41) | Secondary Retail (Policy LP28) | Local Historic Park and Garden (Policy LP13) | |
| Mixed Use Allocation (Policy LP3, LP4, LP5, LP6, LP8A) | Commercial (Policy LP31) | Area of Special Character (Policy LP14) | |
| Economic Development Allocation (Policy LP3, LP98) | Residential Allocation (Policy LP3, LP7, LP9D, LP24) | Existing Community and Built Leisure Facilities (Policy LP3, LP32) | |
| Existing Employment Area (Policy LP3, LP6, LP16) | Existing Residential Caravans or Park Homes Site (Policy LP25) | Community / Built Leisure Allocation (Policy LP3, LP9E, LP32) | |
| Employment Land Allocation (Policy LP3, LP9C, LP16) | Gypsies and Travellers Site Allocation (Policy LP26) | | |
| Employment Priority Site (Policy LP3, LP16) | Safeguarded Land for Transport Improvement (Policy LP21) | | |
| Existing Tourism Accommodation (Policy LP18) | Ramsar Site (Policy LP3, LP41, LP42) | | |
| | Special Protection Area (Policy LP3, LP41, LP42) | | |
| | Special Area of Conservation (Policy LP3, LP41, LP42) | | |
| | Site of Special Scientific Interest (Policy LP41, LP42) | | |
| | Local Nature Reserve (Policy LP43) | | |

The latest available details of the following matters are shown on the Borough Council's website: www.gosport.gov.uk/localplan2029
 Hampshire Minerals and Waste Plan - Hampshire County Council (Policy LP40)
 Areas at Risk of Flooding - Environment Agency (Policy LP45)
 Safeguarded Area (Policy LP15)

- Fleetlands Helipad
- The Storage of Defence Munitions
- The Aerodrome at Daedalus
- Southampton Airport- follows Borough Boundary

SCALE 1:10,000

© Crown copyright and database rights 2014 Ordnance Survey 100019624