

Sustainability Appraisal Scoping Report

Gosport Borough Local Plan 2038

Final Version – March 2021

Gosport Borough Council



GOSPORT
Borough Council

Contents

1	Introduction	1
	Overview	1
	What is this document?	3
	What is Sustainable Development?.....	3
	Gosport Borough Local Plan 2038	4
	Structure and purpose of the Scoping Report	5
2	Policies, plans and programmes, & sustainability objectives – STAGE A1	7
	Methodology	7
3	Collecting Baseline Information – STAGE A2	8
	Aims and objectives.....	8
	Methodology	8
4	Identifying sustainability issues and problems – STAGE A3	9
	Identifying sustainability issues	9
	Key sustainability issues	9
5	Developing the sustainability appraisal framework – STAGE A4	14
	Why are we using a sustainability appraisal framework?	14
	The proposed sustainability appraisal framework.....	15
	Use of the SA framework and the SA matrix.....	15
6	Consulting on this scoping report – STAGE A5	29
	Consultation.....	29
	Next steps	29
7	Appendix 1 – Policies, Plans and Programmes	30
	International	30
	National.....	30
	Regional and sub-regional (South Hampshire)	34
	Hampshire.....	36
	Gosport	37
	Other	38

Figures

Figure 1: The sustainability appraisal and local plan process (MHCLG)	2
Figure 2: What is addressed in Stage A – ‘the scoping stage’?.....	3
Figure 3: Structure of the SA framework	14
Figure 4: SA matrix key.....	15

Tables

Table 1: Structure of the scoping report.....	5
Table 2: The key sustainability issues.....	10
Table 3: SA Framework for the Gosport Borough Local Plan 2038 (with indicators)	16

Abbreviations

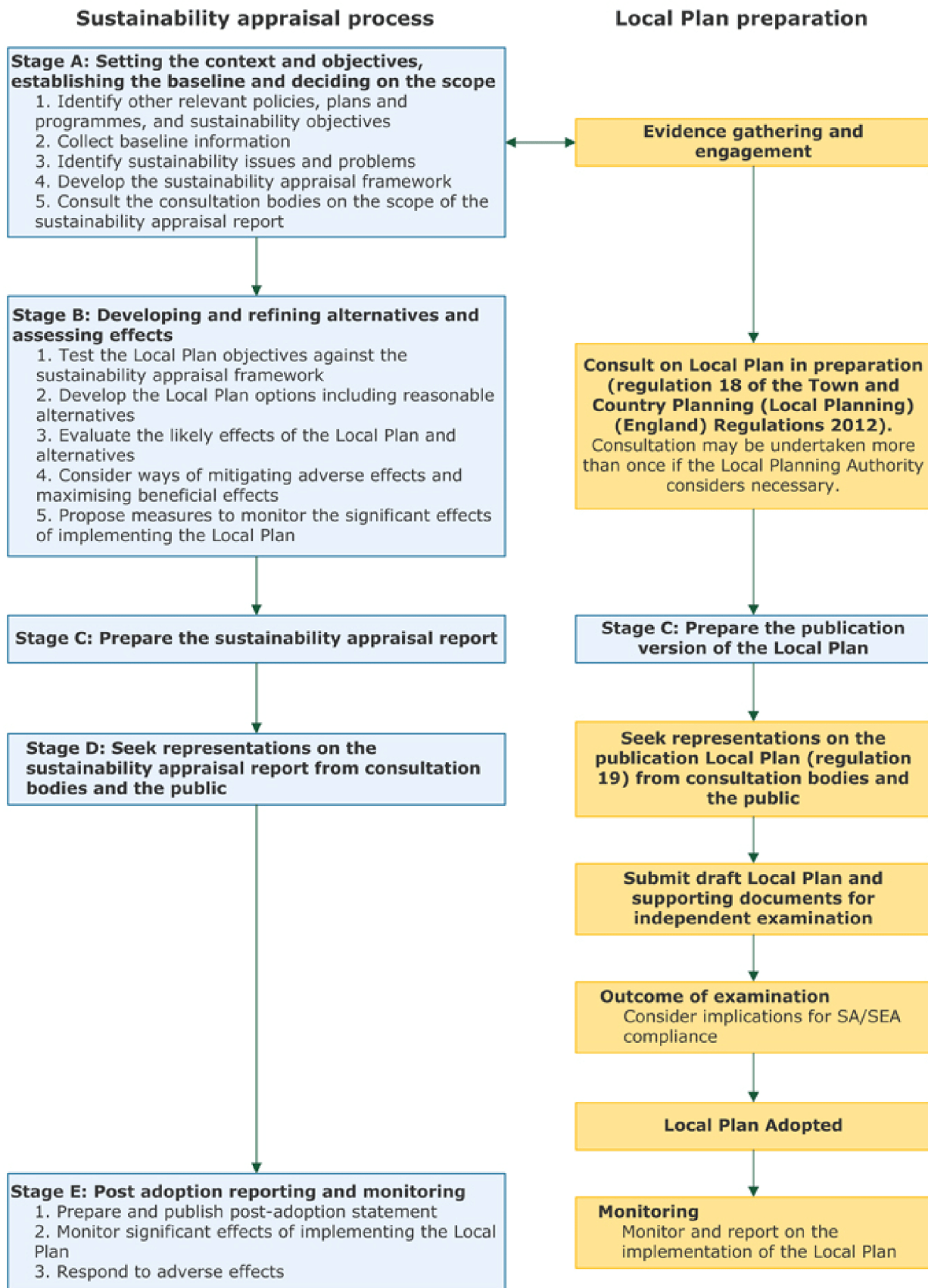
GBLP	Gosport Borough Local Plan 2011-2029 (adopted October 2015)
GBLP 2038	The emerging Gosport Borough Local Plan 2038
MHCLG	Ministry of Housing, Communities and Local Government
MoD	Ministry of Defence
NPPF	National Planning Policy Framework
PfSH	Partnership for South Hampshire
PPG	Planning Practice Guidance
PPPs	Policies, plans and programmes
SA	Sustainability Appraisal
SCI	Statement of Community Involvement
SEA	Strategic Environmental Assessment

1 Introduction

Overview

- 1.1. Gosport Borough Council is currently reviewing the adopted Gosport Borough Local Plan 2011-2029 (adopted October 2015). The revised Local Plan (named the Gosport Borough Local Plan 2038 (GBLP 2038)) will set out the vision, objectives, planning policies and site allocations that will guide development in Gosport Borough up to 2038. As part of the review, the Council is required to undertake a *Sustainability Appraisal (SA)* of the Local Plan.
- 1.2. The purpose of the SA is to promote sustainable development by assessing the extent to which the Local Plan, when judged against reasonable alternatives, will help to achieve relevant environmental, economic, and social objectives. The SA can result in changes to site allocations and planning policies to make them more sustainable and/or recommended options that can mitigate the identified impacts.
- 1.3. The legal requirement to undertake SA during the preparation of a local plan comes from [Section 19](#) of the Planning and Compulsory Purchase Act 2004. [Paragraph 32](#) of the National Planning Policy Framework (NPPF) sets out the requirement for local plans to be informed throughout their preparation by a sustainability appraisal that meets the relevant legal requirements.
- 1.4. The SA should demonstrate how the plan has addressed relevant economic, social and environmental objectives including opportunities for net gains. Significant adverse impacts on these objectives should be avoided and, wherever possible, alternative options which reduce or eliminate such impacts should be pursued. Where significant adverse impacts are unavoidable, suitable mitigation measures should be proposed or, where this is not possible, compensatory measures should be considered.
- 1.5. The Government's national [Planning Practice Guidance \(PPG\)](#) amplifies the guidance in the NPPF and sets out advice about how sustainability appraisal should be undertaken, detailing the key stages of the process and how they relate to the preparation of a local plan. This process is shown in Figure 1 on the following page.

Figure 1: The sustainability appraisal and local plan process (MHCLG)



What is this document?

- 1.6. This Scoping Report addresses Stage A – ‘the scoping stage’. The scoping stage is the first part of the SA process and identifies what should be covered and in how much detail. It establishes the context, objectives and approach of the appraisal and identifies relevant environmental, economic and social issues and objectives.
- 1.7. **This document is not the Sustainability Appraisal Report. It forms the first stage in the preparation of the Sustainability Appraisal Report.**
- 1.8. An overview of the steps involved in Stage A is shown in Figure 2. A detailed breakdown of each section of this report is listed later in this section in Table 1.

Figure 2: What is addressed in Stage A – ‘the scoping stage’?

Stage A: Setting the context and objectives, establishing the baseline and deciding on the scope

- Identify other relevant policies, plans and programmes, and sustainability objectives
- Collect baseline information
- Identify sustainability issues and problems
- Develop the sustainability appraisal framework
- Consult the consultation bodies on the scope of the sustainability appraisal report

What is Sustainable Development?

- 1.9. The purpose of the SA is to promote sustainable development. The most commonly cited definition of sustainable development stems from the Brundtland Report of 1987 ‘Our Common Future’¹. It defines sustainable development as:
‘Meeting the needs of the present without compromising the ability of future generations to meet their own needs’²
- 1.10. In the United Kingdom, the Government seek to achieve sustainable development in all planning policies and decisions using the ‘planning system’. National Planning Policy sets out three overarching objectives which local plans and decision making need to pursue to achieve sustainable development:
 - **an economic objective** – to help build a strong, responsive and competitive economy.
 - **a social objective** – to support strong, vibrant and healthy communities.
 - **an environmental objective** – to contribute to protecting and enhancing our natural, built and historic environment.

¹ UN World Commission on Environment and Development (UNWCED) (1987) Our Common Future.

² Resolution 42/187 of the United Nations General Assembly

Gosport Borough Local Plan 2038

- 1.11. It is a statutory requirement for each local planning authority to have an up-to-date local plan. In 2018 the Government published an updated NPPF which states that local plans should be 'reviewed' every five years. The NPPF was updated again in February 2019.
- 1.12. As part of the review process the Council has identified policies that need updating. The current Local Plan was adopted in 2015 and covers the period to 2029, despite this it is considered necessary to prepare a revised plan to cover the period to 2038. The key reasons for this include:
- The Inspector for the Examination in Public into the adopted GBLP stated in their report³ that, *'the publication of the South Hampshire Strategy Review will necessitate a full or partial review of the Local Plan'*. Since the adoption of the GBLP, the Partnership for South Hampshire (PFSH) has produced the Spatial Position Statement (June 2016) which sets out the quantum for employment floorspace and housing required for the sub-region including for each district over the period to 2034.
 - However, since the publication of the Spatial Position Statement, the Government has updated the NPPF with a new method for calculating housing need (the standard method), the Housing Delivery Test and other significant changes which need to be considered in the GBLP 2036 and collectively by PFSH authorities.
 - In 2016, the Government announced its intentions to release the Fort Blockhouse site on the Haslar Peninsula by 2020 (although is now likely in 2021/22). Given the size of the site, its release has significant implications for the future development strategy of the Borough.
 - In November 2016 the Government announced proposals to release HMS Sultan by 2026. In 2019, the Government announced that a decision on the disposal of HMS Sultan will be made in 2029. The Borough Council strongly considers that HMS Sultan should be retained as a major MoD training facility. The uncertainty regarding the future of the site has significant implications for the future development strategy of the Borough. If the Government disposes of the site, the Council's preferred option for the long term future of Sultan is to retain and enhance employment opportunities on the site. The Council continue to strongly lobby for the retention of HMS Sultan as a military training establishment.
 - Other publicly-owned sites are to be released such as Haslar Barracks (the Former Immigration Removal Centre) that need to be considered strategically.
- 1.13. In addition to the above the Council will need to consider the short, medium and long term implications of the Covid-19 pandemic, many of which are not yet fully understood. The Local Plan will have a role in the Borough's economic, social and environmental recovery and a

³ <https://www.gosport.gov.uk/article/1243/Local-Plan-2011-2029-stages>

sustainable approach will be integral to the Local Plan in terms of its vision, objectives, policies and proposals.

Structure and purpose of the Scoping Report

- 1.14. Following this introductory section, the Scoping Report is split into five sections. To fulfil the regulatory requirements of SA the five sections in this Report mirror the five steps set out in national planning guidance for 'Stage A – the scoping stage'. The content and purpose of each section are set out in Table 1.

Table 1: Structure of the scoping report

Stage A1 – Policies, plans and programmes, & sustainability objectives
<ul style="list-style-type: none">• Stage A1 identifies and summarises the relevant policies, plans and programmes from relevant international, national, regional and local strategies and guidance. It also identifies the sustainability objectives which influence the GBLP review.• This establishes how the Local Plan is affected by external factors and helps to identify ideas for how constraints can be addressed, and to help to identify SA objectives.• A review of relevant policies, plans and programmes is contained in the Background Papers which will accompany the GBLP 2036 when published for Regulation 18 consultation later in 2021. A list of the range of policies, plans and programmes reviewed is set out in Appendix 1: Policies, Plans and Programmes.
Stage A2 – Collecting Baseline Information (Gosport Profile)
<ul style="list-style-type: none">• Stage A2 sets out the latest information relating to Gosport Borough that is used to identify issues and trends which may need addressing through the Local Plan. Baseline information is set out in the 'Gosport Profile' (available online www.gosport.gov.uk/gosportprofile). The baseline data includes social, economic and environmental information. Establishing a baseline helps to identify current issues and is useful in monitoring the ongoing effectiveness of the Local Plan. Local information and trends are compared with wider regional and national data where available.• The baseline information provides an evidence base for environmental problems, the prediction of effects, and future monitoring; it also helps in the development of SA objectives.• The baseline information will be updated throughout the plan period and published on the Council's website.
Stage A3 – Identifying sustainability issues and problems
<ul style="list-style-type: none">• Stage A3 draws out the key issues and trends that can be seen in the baseline information and the review of relevant policies, plans and programmes. It also identifies key sustainability objectives and sustainability issues which the Local Plan should consider.• This helps to focus and streamline the SA, including the baseline information analysis, the setting of the SA objectives, and prediction of effects and monitoring.

Stage A4 – Developing the sustainability appraisal framework

- Stage A4 establishes the sustainability appraisal framework which consists of sustainability objectives that provide a basis for assessing whether the objectives, policies and proposals of the Local Plan are the most appropriate to achieve sustainable development.
- SA objectives will test the environmental effects of the plan or compare the effects of alternatives. They provide a framework in which the social, environmental and economic effects of the plan can be tested and success or failure in meeting sustainability objectives can be measured.

Stage A5 – Consulting on this scoping report

- Sets out the consultation process for this scoping report. The section details the key bodies who are consulted and how they can view the document and offer their comments.
- This helps to ensure the SA covers the likely significant environmental effects of the plan.

2 Policies, plans and programmes, & sustainability objectives – STAGE A1

Methodology

- 2.1. To meet the requirements of the SEA Directive and national policy and guidance it is necessary to take account of other relevant policies, plans, programmes (PPPs) and the sustainability objectives contained within them.
- 2.2. A review has been undertaken of an appropriate range of PPPs and their sustainability objectives which may inform and influence the GBLP 2038 policies and allocations. Only pertinent PPPs appropriate to the content and level of detail in the GBLP 2038 are included in the review. While many international and national policies have an indirect influence on the Local Plan, it is considered that these are translated into more immediate national and local documents. For this reason, high-level international policies, plans and programmes (such as those relating to internationally important habitats) are not individually considered.
- 2.3. The detailed consideration of these PPPs will be individually set out in the relevant Background Papers accompanying the GBLP 2038 at Regulation 18 consultation stage later in 2021. A list of the range of policies, plans and programmes reviewed is set out in Appendix 1: Policies, Plans and Programmes.

3 Collecting Baseline Information – STAGE A2

Aims and objectives

- 3.1. This section addresses ‘Stage A2’ and presents the baseline information applicable to Gosport Borough. The Gosport Profile (available online: www.gosport.gov.uk/gosportprofile) contains facts and figures which are used to identify the issues which the GBLP 2038 needs to address.
- 3.2. This baseline information refers to the existing environmental, economic and social characteristics of the area which may be affected by the Local Plan and considers the likely evolution of the area without the implementation of a Local Plan. Where appropriate, data is included showing historic and potential future trends. This information helps to measure the potential effects of the implementation of the new Local Plan and its policies and site allocations.

Methodology

- 3.3. [Schedule 2](#) of The Environmental Assessment of Plans and Programmes Regulations 2004 sets out the issues which must be covered in the baseline information. The Gosport Profile themes differ from the names used in the SEA Directive as it is considered that presenting these themes in this way will help the reader easily locate the information and better understand its relationship to the policy sections of the Local Plan.
- 3.4. The Gosport Profile is presented as an online resource at www.gosport.gov.uk/gosportprofile. Where available the latest information about Gosport Borough is presented. The document is updated annually and provides an accessible location to find information and allows closer interrogation of the raw data if desired.
- 3.5. Key issues arising from the information in the Gosport Profile are summarised using social, economic and environmental indicators in the table at the beginning of each profile section. The information reflects the current situation concerning a particular issue and where information is available it also includes the historic trend. Where appropriate, national and regional targets have been included which have been set by the Government and other relevant organisations such as the Environment Agency. Local targets have been included where these have been set within existing Council plans and strategies.
- 3.6. An appraisal of relevant key issues arising from the Gosport Profile will be included in the Sustainability Appraisal. These appraisals will include:
 - The social, environmental and economic consequences of particular indicators;
 - whether any problems are permanent or temporary;
 - whether it would be difficult to remedy these problems; and
 - has there been, or will there be significant cumulative effects?

4 Identifying sustainability issues and problems – STAGE A3

Identifying sustainability issues

- 4.1. An analysis of the review of relevant policies, plan, programmes and sustainability objectives and the baseline data in the Gosport Profile has highlighted the economic, environmental and social issues that need to be considered in the Local Plan and SA appraisal.
- 4.2. The key sustainability issues that need to be addressed by the Local Plan are shown in Table 2. These key issues are drawn together and summarised thematically. The issues identified are taken forward and developed into similar themes in the SA framework with individual sustainability objectives seeking to address the identified issues.
- 4.3. A key sustainability issue has been identified where:
 - An issue is considered to be of significance in international and/or national policy and can be influenced by local planning policy; and/or
 - a relevant indicator/measurement is approaching or has breached a recognised target in Gosport Borough; and/or
 - the Borough performs significantly worse in comparison with national averages, county averages or other appropriate geographies; and/or
 - there is a common consensus among local stakeholders that the matter is a critical sustainability issue for the Borough.

Key sustainability issues

- 4.4. It is recognised that the sustainability issues facing the Borough will change over time and need to be continually reviewed using the most up to date information and to reflect identified priorities. Table 2 sets out the key sustainability issues for Gosport Borough; thirteen have been identified.
- 4.5. The Council is acutely aware that the current Covid-19 pandemic will continue to impact on economic, social and environmental objectives over the short, medium and long-term future. Often these impacts will be in many ways and will not yet be fully understood. Consequently, it is recognised that the key sustainability issues set out in Table 2 may need further review as the Local Plan is progressed. However, it is considered that Table 2 identifies the key issues facing the Borough which in many cases (but not all) have been exacerbated by the pandemic.

Table 2: The key sustainability issues

ISSUE 1: MITIGATING AND ADAPTING TO CLIMATE CHANGE

The Local Plan needs to:

- deal with the consequences of climate change in a proactive way by taking into account the long-term implications for flood risk, coastal change, water supply, biodiversity and landscapes, and the risk of overheating from rising temperatures; and
- include measures which support the transition to net zero carbon by 2050 thereby reducing greenhouse gas emissions.

ISSUE 2: USING RESOURCES SUSTAINABLY

The Local Plan needs to:

- ensure development minimises the use of resources including water, energy and materials and that these are from sustainable sources;
- ensure development minimises waste;
- help reduce air pollution including traffic-borne pollution on the A32 and the impact on residents of Gosport and Fareham;
- facilitate the development of renewable energy sources; and
- develop brownfield sites within urban areas and thereby help regenerate the Borough and reduce the pressure on greenfield sites in the sub-region.

ISSUE 3: REGENERATING THE LOCAL ECONOMY AND IMPROVING LOCAL EMPLOYMENT AND SKILL OPPORTUNITIES

The Local Plan needs to:

- enable the development of brownfield sites for employment purposes to compensate for job losses on these sites;
- assist in regenerating the local economy to provide a significant number of local jobs to help alleviate deprivation and social exclusion, and reduce out-commuting;
- ensure there is sufficient employment land available to meet the needs of a range of modern businesses including those of existing clusters (advanced manufacturing, marine and aviation) as well as emerging sectors (environmental technology);
- facilitate diversification of the economy;
- consider ways in which the local skill levels can be enhanced;
- facilitate the refurbishment of existing sites; and
- continue to develop the tourism and leisure sector.
- ensure a green recovery following the significant economic implications of the Covid-19 pandemic to meet net-zero carbon requirements

ISSUE 4: IMPROVING ACCESSIBILITY AND REDUCING CAR USAGE

The Local Plan needs to:

- ensure that employment, services and facilities are conveniently accessible to residents;
- ensure road access to the peninsula is improved;
- encourage less car-use and more travel by other more sustainable modes;
- ensure public transport links are significantly improved to services and employment areas within Gosport and the sub-region; and
- ensure cycling and pedestrian networks are safe and convenient.

ISSUE 5: IMPROVING HEALTH AND WELL-BEING

The Local Plan needs to:

- ensure that existing health facilities are safeguarded and land is available for new facilities in accessible locations;
- recognise that there will be health and social care implications arising from the Covid-19 pandemic;
- ensure open spaces including natural green spaces are accessible to residents to allow opportunities for passive and active recreation to assist with an individual's physical and mental well-being; and
- ensure places are safe and accessible so that crime and disorder do not undermine people's quality of life or community cohesion.

ISSUE 6: MEETING HOUSING NEEDS

The Local Plan needs to:

- meet the requirements of the Borough's ageing population and ensure the increasing number of households are accommodated;
- ensure sufficient affordable housing is provided to meet local needs;
- ensure there are an appropriate range and mix of dwellings to meet local needs at each stage of life;
- ensure new housing contributes towards the regeneration of the Borough;
- ensure housing at an appropriate density is located on sites which are accessible to public transport and local services; and
- enable ageing stock to be refurbished or redeveloped to meet modern housing standards.

ISSUE 7: MAINTAINING VIBRANT CENTRES

The Local Plan needs to:

- ensure the continued viability and vitality of Gosport Town Centre, which is considered vulnerable from competition from other centres in the sub-region; and
- ensure centres have a more diverse range of uses, recognising the significant shift in retail spending patterns that continue to occur, and has been accelerated by the effects of the Covid-19 pandemic; and

→ ensure that all the centres have a range of facilities and services appropriate to their size to serve the local neighbourhood.

ISSUE 8: PROVIDING INFRASTRUCTURE AND SERVICES

The Local Plan needs to:

- consider ways in which existing infrastructure deficiencies can be addressed; and
- ensure the provision of the appropriate level of infrastructure and services to meet the needs generated by new development.

ISSUE 9: IMPROVING LEISURE AND CULTURAL FACILITIES

The Local Plan needs to:

- enable the provision of improved leisure and cultural facilities to improve the quality of life for residents and visitors.

ISSUE 10: CREATING A LOCAL AND SUB-REGIONAL GREEN INFRASTRUCTURE NETWORK

The Local Plan needs to:

- protect and enhance its existing green infrastructure network;
- identify new green infrastructure opportunities within the Borough and linkages to neighbouring areas within the sub-region;
- protect and enhance the Alver Valley Country Park to reduce pressure on protected habitats in the sub-region and reduce the need to travel to other recreational areas outside of the Borough;
- facilitate improvements to open space facilities to meet identified deficiencies in terms of quality, quantity and accessibility (sports pitches, allotments, cemetery, play areas); and
- improve public access to the coast and countryside where appropriate.

ISSUE 11: PROTECTING AND IMPROVING THE NATURAL ENVIRONMENT

The Local Plan needs to:

- ensure all new development results in a biodiversity net gain and resist the loss of habitats which support a range of species;
- protect and enhance the Borough's internationally, nationally and locally important habitats and species which face pressure from direct and indirect habitat loss, deteriorating air and water quality, climate change and recreational disturbance.

ISSUE 11: MAINTAINING AND IMPROVING THE QUALITY OF THE BUILT ENVIRONMENT

The Local Plan needs to:

- preserve and enhance the Borough's rich historic environment and character which contributes to the local distinctiveness of the Borough;
- ensure new development is designed to a high quality; and

→ ensure areas are safe and attractive places to live, work and visit, including designs which can reduce crime, disorder and the fear of crime.

ISSUE 12: PRESERVING AND ENHANCING THE HISTORIC ENVIRONMENT

The Local Plan needs to:

- meet the Borough's development needs without harming the historic environment
- ensure all development maximises opportunities to ameliorate the condition of heritage at risk
- ensure opportunities to improve areas where past development or current activity negatively affects the quality of the historic environment or how its experienced are realised

ISSUE 13: DEALING WITH THE CONSEQUENCES OF AN AGEING POPULATION

The Local Plan needs to:

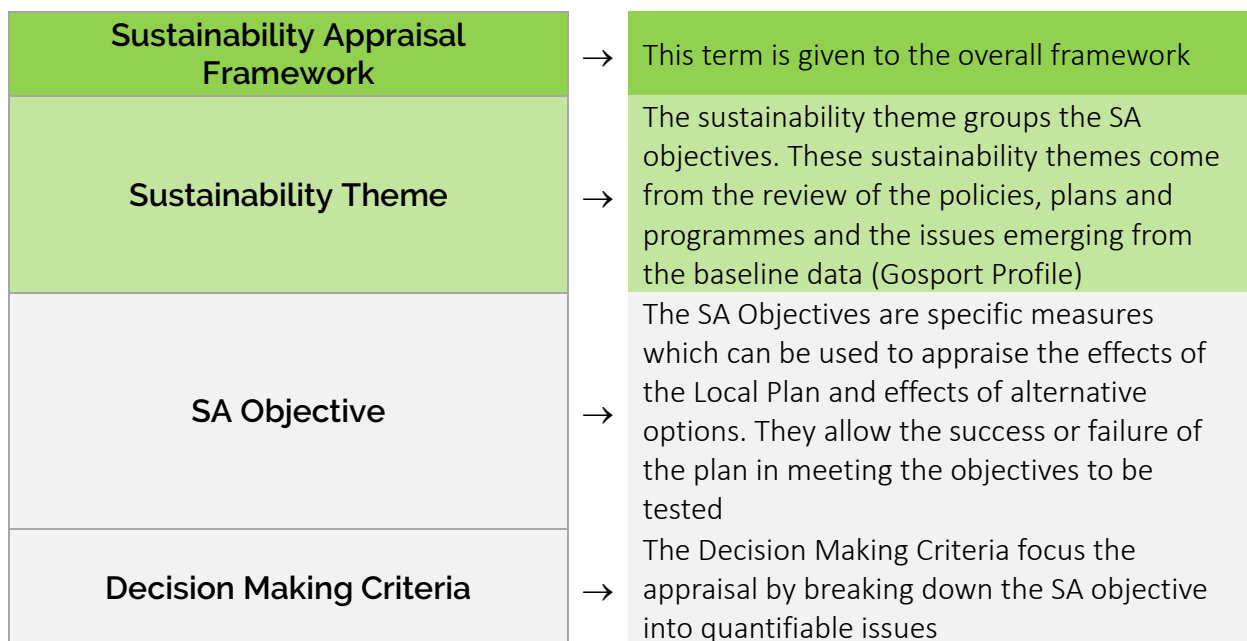
- ensure there are appropriate and sufficient housing and care facilities for older people;
- ensure there are sufficient transport, health and leisure facilities for older residents.

5 Developing the sustainability appraisal framework – STAGE A4

Why are we using a sustainability appraisal framework?

- 5.1. The development of a SA framework is a recognised method used to describe, analyse and compare the likely environmental and sustainability effects of a local plan. The SA framework is made up of SA objectives and decision making criteria. Figure 3 shows the structure of the SA framework and how the SA objectives and decision-making criteria relate to each other.
- 5.2. The GBLP 2038 will be assessed by testing the plans objectives, policies and proposals against the SA framework. The appraisal will help to determine whether the objectives, policies and proposals in the Local Plan are appropriate in helping to achieve relevant environmental, economic and social objectives. It will also test the social, environmental and economic effects of the plan and compare the effects of alternatives while measuring success or failure in meeting the SA objectives.

Figure 3: Structure of the SA framework



SA objectives

- 5.3. The SA objectives are grouped by themes and mirror many national and international sustainability objectives, they have been adapted to suit the Borough's local circumstances. While the SA objectives are distinct from the Local Plan objectives, in many cases they overlap. The SA objectives have been derived from the findings of the review of relevant policies, plans and programmes, the evidence obtained in the Gosport Profile and the identification of sustainability issues.

Decision making criteria

- 5.4. Given the broad nature of sustainability objectives, to assist in assessing whether the objectives, policies and proposals of the Local Plan are the most appropriate in sustainability terms and the degree to which they meet the sustainability objectives, the Council will use decision-making criteria.
- 5.5. Each SA objective has a different number of decision-making criteria depending on the key issues which have arisen from the policies, plans and programmes review and the collection and analysis of baseline data. Most of the decision making criteria link to an indicator included in the baseline data (Gosport Profile).

The proposed sustainability appraisal framework

- 5.6. Table 3 (overleaf) shows the proposed SA framework and its SA objectives and decision-making criteria, which are grouped by sustainability themes.
- 5.7. The framework covers a broad range of sustainability issues including economic, social and environmental factors. Using the findings of the review of relevant existing policies, plans and programmes and the most recent baseline information in the Gosport Profile, the objectives and framework have been revised, building upon those used in the adopted Local Plan (Gosport Borough Local Plan 2011-2029).

Use of the SA framework and the SA matrix

- 5.8. The appraisal of each Local Plan policy/site option will be presented in SA matrices. The matrices will include a coded symbol showing the score for the policy/site option against each of the SA objectives along with a concise justification for the given score. The SA matrices for each policy/site option will be summarised in the body text of the SA report and presented in full in an addendum to the report.
- 5.9. The use of symbol coding in the matrices allows for likely significant effects (both positive and negative) to be readily identified. Figure 4 presents the key showing the symbols that will be used in the matrix.

Figure 4: SA matrix key

	The effects over time:
KEY	++ major positive + positive o neutral ? uncertain - negative -- major negative

Table 3: SA Framework for the Gosport Borough Local Plan 2038 (with indicators)

Sustainability Themes	SA Objective	Decision Making Criteria	Baseline Indicators
Climate Change	SA1 – To address climate change issues through reducing greenhouse gas emissions.	1. Will it help to reduce carbon dioxide and other greenhouse gas emissions?	<ul style="list-style-type: none"> Per capita CO2 emissions in the LA area (UK local Authority and regional carbon dioxide emissions national statistics) Average annual consumption of gas Average annual consumption of electricity Renewable energy electricity generation
		2. Will it support the transition to net zero carbon by 2050?	
		3. Will it deliver energy efficient buildings?	<ul style="list-style-type: none"> Houses improved for energy efficiency and affordable warmth Percentage of new build homes built to ‘zero-carbon ready’ or Passivhaus standard or equivalent
		4. Will it support the charging of plug-in and other ultra-low emission vehicles?	<ul style="list-style-type: none"> Percentage of new build and retrofit homes with spaces for charging plug-in and other ultra-low emission vehicles. Number of publicly available electric vehicle charging devices and rapid charging devices
Transport and Accessibility	SA2 - To reduce the need to travel and to reduce the effects of traffic on local communities.	1. Will it reduce traffic volumes and congestion?	<ul style="list-style-type: none"> Commuting flows Average distance travelled to work
		2. Will it reduce road traffic accidents?	<ul style="list-style-type: none"> Killed and seriously injured (KSI) casualties on roads (per 100,000 population)

Sustainability Themes	SA Objective	Decision Making Criteria	Baseline Indicators
		3. Will there be an increase in traffic related air and noise pollution?	<ul style="list-style-type: none"> Total road casualties Air quality statistics Noise measurements
		1. Will it increase the proportion of journeys using modes other than the private car?	<ul style="list-style-type: none"> Main mode of travel to work Accessibility to bus services (4 and 8 buses per hour)
	SA3 - To facilitate modal transfer away from use of the private car to other forms of travel including walking, cycling and public transport.	2. Will it provide for high quality walking and cycling networks and supporting facilities such as cycle parking?	<ul style="list-style-type: none"> Access to walking and cycling networks of high quality, including routes into the countryside Access to good quality cycle parking
		1. Will it improve access to local services?	<ul style="list-style-type: none"> Located within 20/30 minutes by public transport and walking to a range of services. Accessibility to principal, district and local centres by public transport or walking
	SA4 - To improve accessibility to a range of quality services and facilities including health, transport, education, training, employment and leisure opportunities.	2. Will it make access easier for those without a car?	<ul style="list-style-type: none"> Accessibility to bus services (4 and 8 buses per hour) Access to walking and cycling networks of high quality
		3. Will it make access easier for disabled and or elderly people?	<ul style="list-style-type: none"> Access for disabled and or elderly people
Community Activity and Neighbourhoods	SA5 - To provide opportunities for community interaction and improve the quality of where people live.	1. Will it provide opportunities for engagement in community activities?	<ul style="list-style-type: none"> Number of community facilities available
		2. Will it improve neighbourhoods as places to live?	<ul style="list-style-type: none"> Accessibility to key services Access to open space, sports or

Sustainability Themes	SA Objective	Decision Making Criteria	Baseline Indicators
			leisure facilities
Crime and Disorder	SA6 - To reduce crime and disorder	1. Will it reduce actual levels of crime and disorder?	<ul style="list-style-type: none"> Local and national crime statistics Indices of Deprivation: Crime domain
Poverty and Deprivation	SA7 - To reduce poverty and social exclusion and close the gap between Gosport and other areas in the South East region.	1. Will it reduce poverty and social exclusion in those areas most affected?	<ul style="list-style-type: none"> Indices of Deprivation and Index of Multiple Deprivation Income deprivation Children in low incomes families (under 16s) Percentage of the population of working age who are universal credit Percentage of households in fuel poverty (sub-regional fuel poverty stats)
Health and Well-being	SA8 - To improve the health and wellbeing of the population, reduce inequalities in health and improve health facilities.	1. Will it reduce health inequalities in those areas most affected?	<ul style="list-style-type: none"> Life expectancy at birth Indices of Deprivation: Health deprivation and disability deprivation Under 18 conception rates (per 1,000 females aged 15-17) Mortality rates from all causes, all cardiovascular diseases, and cancer Deaths from drug misuse (per 100,000 population) Suicide rate (per 100,000 population) Infant mortality rates: Deaths of infants up to 1 year of age (per 1,000 live births)

Sustainability Themes	SA Objective	Decision Making Criteria	Baseline Indicators
			<ul style="list-style-type: none"> • Children in low income families (under 16s) • Reception prevalence of overweight (including obesity) • Year 6 prevalence of overweight (including obesity) • Percentage of adults (aged 18+) classified as overweight or obese
		2. Will it enable and support healthy lifestyles?	<ul style="list-style-type: none"> • Participation in sports activities (Active Lives Local Level Data) • Proportion of adults who walk or cycle • Percentage of physically active adults • Reception prevalence of overweight (including obesity) • Year 6 prevalence of overweight (including obesity) • Percentage of adults (aged 18+) classified as overweight or obese • Proportion of journeys (to work) on foot or by cycle • Access to local greenspace
		3. Will it improve access to health facilities?	<ul style="list-style-type: none"> • Accessibility to health services
Housing	SA9 - To ensure that everyone has the opportunity to live in a decent and affordable home.	1. Will it reduce homelessness?	<ul style="list-style-type: none"> • Recorded homeless • Households on the Housing Register
		2. Will it increase the range and affordability of housing for different	<ul style="list-style-type: none"> • Housing completion figures

Sustainability Themes	SA Objective	Decision Making Criteria	Baseline Indicators
		groups in the community?	<ul style="list-style-type: none"> • Vacant dwellings • Types and sizes of dwellings • Affordable housing completion figures • Average property prices for different types of dwellings • Average property price compared against average earnings ratio
		3. Will it increase the number of decent homes?	<ul style="list-style-type: none"> • Decent Homes Standard
Education and Skills	SA10 - To raise educational achievement and develop the opportunities for everyone to acquire the skills needed to find and remain in work.	1. Will it improve the qualifications and skills of young people?	<ul style="list-style-type: none"> • Average attainment 8 score • Indices of Deprivation: Education domain
		2. Will it improve the qualifications and skills of the population overall?	<ul style="list-style-type: none"> • Highest level of qualifications for Gosport residents
Employment	SA11 - To provide opportunities for residents to work locally rather than out-commute and thereby provide greater potential for people to use public transport, cycle or walk to work.	1. Will it reduce out-commuting from the Borough?	<ul style="list-style-type: none"> • Jobs density • Distance travelled to work • Location of jobs in proximity to residents
		2. Will it improve accessibility to work by public transport, walking and cycling?	<ul style="list-style-type: none"> • Proposed development/improvements of key infrastructure/services • Travel to work by alternative modes (cycling, walking, work transport schemes, car share)
	SA12 - To ensure high and stable levels of employment so everyone can benefit	1. Will it reduce overall unemployment?	<ul style="list-style-type: none"> • Unemployment figures • Universal Credit Claimant counts

Sustainability Themes	SA Objective	Decision Making Criteria	Baseline Indicators
	from the economic growth of the Borough.		<ul style="list-style-type: none"> Economic Activity Rates
		2. Will it reduce long-term unemployment?	<ul style="list-style-type: none"> Long term unemployment
		3. Will it provide job opportunities for those most in need of employment?	<ul style="list-style-type: none"> Indices of Deprivation: Employment domain Youth unemployment Proportion of lone parents, long-term ill and disabled people who are economically active
		4. Will it help to improve average earnings?	<ul style="list-style-type: none"> Average earnings – by place of residence and place of work Income deprivation
Economy	SA13 - To increase investment in Gosport's economy to facilitate the sustainable regeneration of the Borough.	1. Will it make more effective use of previously developed land?	<ul style="list-style-type: none"> Development of employment uses on previously developed land
		2. Will it improve business development and enhance competitiveness?	<ul style="list-style-type: none"> Gross Value Added per head Total local units in Gosport Total enterprises in Gosport Business density
		3. Will it improve the resilience of business and the economy?	<ul style="list-style-type: none"> Diversity of economic sectors represented in the area Relative employment growth in different economic sectors in the area
		4. Will it promote growth in key sectors and clusters?	<ul style="list-style-type: none"> Growth in employment in key sectors Growth in the number employed by local businesses
		5. Will it make land and property available for business development?	<ul style="list-style-type: none"> Proposed development of key sites Employment land availability (amount

Sustainability Themes	SA Objective	Decision Making Criteria	Baseline Indicators
			of land/premises available, completions and vacancies)
	SA14 - To encourage the development of a buoyant, sustainable tourism sector.	1. Will it positively contribute to the local tourism industry and improve the image of Gosport as a destination?	<ul style="list-style-type: none"> • Number of visitors • Tourist expenditure • Employment within the tourism sector • Marina capacity
Towns and Neighbourhood Centres	SA15 - To ensure the vitality and viability of the Borough's principal, district, and neighbourhood centres.	1. Will it improve the accessibility to, and quality of, main town centre uses (as defined in NPPF Annex 2)?	<ul style="list-style-type: none"> • Accessibility to town and local centres • Amount and location of existing and new retail floorspace • Amount and location of existing and new floor space for other types of town or local centre uses
		2. Will it improve the vitality and viability of centres?	<ul style="list-style-type: none"> • Vacancy rates (quantitative assessments) in Principal, District and Neighbourhood Centres • Use classes (quantitative assessments) in Principal, District and Neighbourhood Centres • Pedestrian footfall • Qualitative assessment of Principal and District Centres
Leisure	SA16 - To improve the quality and accessibility of leisure opportunities within the Borough.	1. Will it improve the range of sporting facilities in the Borough?	<ul style="list-style-type: none"> • Amount and location of existing and new facilities • Participation in sports activities (Active Lives Local Level Data) • Proportion of adults who walk or

Sustainability Themes	SA Objective	Decision Making Criteria	Baseline Indicators
	SA17 - To ensure that the Borough protects and enhances the quality of its public areas and green spaces including the provision of good access to the coast and harbour.		<ul style="list-style-type: none"> cycle Percentage of physically active adults
		1. Will it protect or enhance the Borough's network of greenspace?	<ul style="list-style-type: none"> Location of different types of existing and proposed open space Percentage of population having access to a natural greenspace within 400 metres of their home Open space requirements Quality and value of open space Accessible Natural Greenspace standard Number of people on allotment waiting lists
		2. Will it protect or enhance the quality of the Borough's coast and harbour frontage and maintain or improve public access?	<ul style="list-style-type: none"> Achievement of coastal and marine Biodiversity Action Plan targets National headline indicators i.e. Wetland Bird Survey (WeBS) Alert Amount of the coast and harbour frontage that is publicly accessible
Biodiversity and Geodiversity	SA18 - To conserve and enhance the Borough's biodiversity and geological assets.	1. Will it result in a biodiversity net gain?	<ul style="list-style-type: none"> Biodiversity net gain secured Percentage of major developments generating overall biodiversity enhancement Hectares of biodiversity habitat delivered through Local Plan strategic site allocations
		2. Will it enhance biodiversity through the restoration and creation of well-	<ul style="list-style-type: none"> Length of greenways constructed

Sustainability Themes	SA Objective	Decision Making Criteria	Baseline Indicators
		connected multifunctional green infrastructure?	<ul style="list-style-type: none"> ● Percentage of people having access to a natural greenspace within 400 metres of their home ● Extent of green infrastructure ● Hectares of biodiversity habitat delivered through Local Plan strategic site allocations
		3. Will it maintain and enhance sites designated for their nature conservation interest?	<ul style="list-style-type: none"> ● Extent of SSSIs, SPAs, SACs and Ramsar sites ● Favourable condition of internationally and nationally important sites ● Reported condition of nationally important sites (SSSIs) ● Site integrity based on the condition of designated features of interest ● Extent of local designated sites (SINCs and LNRs) ● Number of planning approvals that generated any adverse impacts on sites of acknowledged biodiversity importance ● Extent of ancient woodland
		4. Will it conserve and enhance local habitats and species diversity, and avoid harm to protected species?	<ul style="list-style-type: none"> ● Retention of landscape and biodiversity features ● Achievement of Biodiversity Action Plan targets and objectives ● National Headline Indicators i.e WeBS

Sustainability Themes	SA Objective	Decision Making Criteria	Baseline Indicators
			<p>Alert</p> <ul style="list-style-type: none"> • Number of characteristic rare species and priority habitats • Area of land actively managed for nature conservation • Extent of ancient woodland
Heritage and Design	SA19 - To protect and enhance the historic environment.	<ol style="list-style-type: none"> 1. Will it protect and enhance the historic environment? 2. Will it improve the condition of any heritage asset identified as at risk? 	<ul style="list-style-type: none"> • Extent and location of Listed Buildings, locally listed buildings, Conservation Areas, National and Local Historic Parks and Gardens, Scheduled Ancient Monuments and other areas of archaeological interest • Number and % of Listed Buildings on the Heritage at Risk Register • Loss or damage to Scheduled Monuments or their setting • Loss or damage to Historic Parks and Gardens or their settings • Number and % of Conservation Areas identified as at risk • Number and % of Conservation Areas without an appraisal
	SA20 - To ensure that there is a high quality townscape incorporating good design principles for buildings and surrounding spaces.	<ol style="list-style-type: none"> 1. Will the design enhance the quality of the townscape? 	<ul style="list-style-type: none"> • National Design Guidance • Local Design Guidance • Design assessments • Townscape assessments
Air Quality	SA21 - To reduce air pollution and ensure air quality continues to improve.	<ol style="list-style-type: none"> 1. Will it improve air quality? 	<ul style="list-style-type: none"> • Measurements of nitrogen dioxide, sulphur dioxide and small particles

Sustainability Themes	SA Objective	Decision Making Criteria	Baseline Indicators
			<ul style="list-style-type: none"> Number of people living in Air Quality Management (AQM) areas
Use of Energy Resources	SA22 - To increase energy efficiency and the proportion of energy generated from renewable sources in the Borough.	1. Will it reduce emissions of greenhouse gases by reducing energy consumption?	<ul style="list-style-type: none"> Per capita CO2 emissions in the LA area (UK local Authority and regional carbon dioxide emissions national statistics) Average annual consumption of gas Average annual consumption of electricity Energy efficiency of homes
		2. Will it lead to an increased proportion of energy needs being met from renewable resources?	<ul style="list-style-type: none"> Renewable energy electricity generation
Use of Land Resources	SA23 - To improve efficiency in land use through the re-use of previously developed land and existing buildings.	1. Will it re-use previously developed land?	<ul style="list-style-type: none"> New homes built on previously developed land Development of employment uses on previously developed land Brownfield Land Register
		2. Will it remediate contaminated land?	<ul style="list-style-type: none"> New homes built on contaminated land New employment uses developed on contaminated land Brownfield Land Register
Water Management	SA24 - To maintain and improve the water quality of the Borough.	1. Will it improve compliance with the Water Framework Directive?	<ul style="list-style-type: none"> Waterbodies (includes riverine, coastal, estuarine and groundwater) meet "good" status or above under WFD

Sustainability Themes	SA Objective	Decision Making Criteria	Baseline Indicators
			<ul style="list-style-type: none"> • Compliance with EC Bathing Water Directive • Compliance with Shellfish Water Directive
	SA25 - To reduce the risk of flooding and the resulting detriment to public well-being, the economy and the environment.	1. Will it minimise the risk of flooding from all sources to people and property?	<ul style="list-style-type: none"> • Provision of suitable flood risk mitigation • Properties at risk from flooding • Development in areas at risk of flooding • Frequency of flooding events
		2. Will development be avoided in flood risk areas?	<ul style="list-style-type: none"> • Properties at risk from flooding • Development in areas at risk of flooding • Frequency of flooding events
		3. Can the site be made safe taking into account predicted sea level rise?	<ul style="list-style-type: none"> • Properties at risk from flooding • Development in areas at risk of flooding • Frequency of flooding events
	SA26 - To provide for sustainable sources of water supply.	1. Will it reduce water consumption?	<ul style="list-style-type: none"> • Average water consumption levels • Availability of sufficient water supply
Natural Resources and Waste Management	SA27 - To reduce waste generation and disposal, and achieve the sustainable consumption of natural resources and management of waste.	1. Will it lead to reduced consumption of materials and resources?	<ul style="list-style-type: none"> • Waste arising and waste management
		2. Will it reduce household waste?	<ul style="list-style-type: none"> • Kg of household waste collected per person • Kg of residual household waste per household
		3. Will it increase recycling?	<ul style="list-style-type: none"> • % of household waste sent for reuse,

Sustainability Themes	SA Objective	Decision Making Criteria	Baseline Indicators
			recycling or composting

6 Consulting on this scoping report – STAGE A5

Consultation

- 6.1. The production of this formal Scoping Report is not required by law, but it is a useful way of presenting the information from the scoping stage of the SA process to the public and other organisations.
- 6.2. This Scoping Report was published for consultation and sent to the ‘consultation bodies’ (Historic England, the Environment Agency and Natural England) as required by Regulation 12 (5) of the UK SEA Regulations 2004. The Borough Council welcomed any comments on the report and the proposed sustainability appraisal framework to ensure all relevant sustainability issues were considered in the SA of the Gosport Borough Local Plan 2036 (2038).
- 6.3. The consultation period lasted five weeks from **Monday 25 January 2021 to Monday 1 March 2021. Responses were received and reflected in this final SA Scoping Report.**
- 6.4. Following the five-week consultation period, all responses were considered and appropriate changes were made to the sustainability appraisal framework. The latest sustainability appraisal framework is presented in this report and will be taken forward to inform the Sustainability Appraisal of the Local Plan.

Next steps

- 6.5. The draft Local Plan will be appraised, and a Sustainability Appraisal report will be produced. This will accompany the Gosport Borough Local Plan 2036 for public consultation in accordance with the provisions of the Council’s Statement of Community Involvement (SCI) (adopted March 2019, available online www.gosport.gov.uk/sci). The SA report will present information on the effects of the plan and will clearly show how the SEA directive’s requirements have been met. A non-technical summary will provide an overview of the SA process and the findings and will be published alongside the SA report.
- 6.6. Comments received on the draft Local Plan during the public consultation will be considered and any resulting changes appraised in a revised SA report. When the Gosport Borough Local Plan 2036 is finalised and approved by the Borough Council, it will be submitted to the Secretary of State for independent examination accompanied by the SA Report and the consultation statement.
- 6.7. Following the examination and successful adoption of the Local Plan, its significant effects will be monitored using the proposed method of monitoring which will be included in the SA Report. Continual monitoring will highlight specific issues and significant effects and lead to more informed decision-making. Monitoring will also form a useful source of baseline information for future updates to the Council’s planning policy documents.

7 Appendix 1 – Policies, Plans and Programmes

The following section sets out a list of key policies, plans and programmes (PPPs) which influence the preparation of the GBLP 2036 and Sustainability Appraisal. The key aims, objectives and requirements of the PPPs and the key implications for the Local Plan are analysed in detail in the Background Papers for the Local Plan which will accompany the Regulation 18 consultation later in 2021.

International

Where appropriate the relevant international policies, plans and programmes have been incorporated into the appropriate national legislation and guidance and are therefore not individually listed here.

National

The key implications and statutory requirements from national legislation are analysed in the individual Background Papers for the Local Plan

Title	Available from:
Planning and Compulsory Purchase Act 2004 (as amended)	
Planning Act 2008 (as amended)	
Environmental Assessment of Plans and Programmes Regulations 2004 (as amended)	
Localism Act 2011 (as amended)	
The Town and Country Planning (Local Planning) (England) Regulations 2012 (as amended)	
The Growth and Infrastructure Act 2013 (as amended)	
The Community Infrastructure Levy Regulations 2010 (as amended)	www.legislation.gov.uk/
UK Climate Change Act 2008 (as amended)	
Energy Act (2008) (as amended)	
Housing Act 2004 (as amended)	
Housing and Planning Act (2016) (as amended)	
The Wildlife and Countryside Act (as amended) 1981	
Natural Environment and Rural Communities (NERC) Act 2006 (as amended)	
Conservation of Habitats and Species Regulations 2017	
Environment Bill 2019-21	
The Flood Risk Regulations 2009 (as amended)	

Title	Available from:
Flood and Water Management Act 2010 (as amended)	
The Water Act (2014) (as amended)	
Marine and Coastal Access Act 2009 (as amended)	
Ancient Monuments and Archaeological Areas Act (1979) (as amended)	
Protection of Wrecks Act 1973	
Planning (Listed Buildings and Conservation Areas) Act (1990) (as amended)	
National Planning Policy Framework (NPPF) (2019)	www.gov.uk/government/publications/national-planning-policy-framework--2
National Planning Practice Guidance (updated regularly)	www.gov.uk/government/collections/planning-practice-guidance
Manual for Streets (2007)	www.gov.uk/government/publications/manual-for-streets
Planning Policy for Traveller Sites (2015)	www.gov.uk/government/publications/planning-policy-for-traveller-sites
National Planning Policy for Waste (2014)	www.gov.uk/government/publications/national-planning-policy-for-waste
Waste Management Plan for England (2013)	www.gov.uk/government/publications/waste-management-plan-for-england
National Design Guide (2019)	www.gov.uk/government/publications/national-design-guide
Industrial Strategy: Building a Britain fit for the future (2017)	www.gov.uk/government/publications/industrial-strategy-building-a-britain-fit-for-the-future
National Infrastructure Strategy (2020)	www.gov.uk/government/publications/national-infrastructure-strategy
Biodiversity 2020: A Strategy for England's Wildlife and Ecosystem Services (2011)	www.gov.uk/government/publications/biodiversity-2020-a-strategy-for-england-s-wildlife-and-ecosystem-services
Biodiversity 2020: A strategy for England's	www.gov.uk/government/statistics/england-

Title	Available from:
wildlife and ecosystem services: Indicators (2018)	biodiversity-indicators
A Green Future: Our 25 Year Plan to Improve the Environment (2018)	www.gov.uk/government/publications/25-year-environment-plan
Green Infrastructure Guidance, Natural England (2011)	http://publications.naturalengland.org.uk/publication/35033
The Environment Agency's Approach to Groundwater Protection (2018)	www.gov.uk/government/publications/groundwater-protection-position-statements
Environment Agency: EA2025 creating a better place (2020)	www.gov.uk/government/publications/environment-agency-ea2025-creating-a-better-place/environment-agency-ea2025-creating-a-better-place
Department for Transport: Cycling and Walking Investment Strategy (2017)	www.gov.uk/government/publications/cycling-and-walking-investment-strategy
UK Renewable Energy Strategy (2009)	www.gov.uk/government/publications/the-uk-renewable-energy-strategy
UK Renewable Energy roadmap: (2013 Update)	www.gov.uk/government/collections/uk-renewable-energy-roadmap
The UK Low Carbon Transition Plan (2009)	www.gov.uk/government/publications/the-uk-low-carbon-transition-plan-national-strategy-for-climate-and-energy
UK Climate Change Risk Assessment (2017)	www.gov.uk/government/publications/uk-climate-change-risk-assessment-2017
Our Waste, Our Resources: A Strategy for England (2018)	www.gov.uk/government/publications/resources-and-waste-strategy-for-england
Public Health England (PHE) Strategy 2020-2025 (2019)	www.gov.uk/government/publications/phe-strategy-2020-to-2025
Historic England Corporate Plan 2020-23 – Building the future	www.historicengland.org.uk/about/what-we-do/corporate-strategy/
Sustainability Appraisal and Strategic	www.historicengland.org.uk/images-

Title	Available from:
Environmental Assessment (Historic England, 2016)	books/publications/sustainability-appraisal-and-strategic-environmental-assessment-advice-note-8/
The Historic Environment and Site Allocations in Local Plans: good Practice Advice Notes (Historic England, 2015)	www.historicengland.org.uk/images-books/publications/historic-environment-and-site-allocations-in-local-plans/
The Historic Environment in Local Plans: Good Practice Advice Notes (Historic England, 2015)	www.historicengland.org.uk/images-books/publications/gpa1-historic-environment-local-plans/
National Heritage List for England (NHLE)	www.historicengland.org.uk/listing/the-list
Historic England – Heritage at Risk Register	www.historicengland.org.uk/advice/heritage-at-risk/search-register/
Clean Air Strategy (2019)	www.gov.uk/government/publications/clean-air-strategy-2019
Safeguarding our Soils: A strategy for England (2009)	www.gov.uk/government/publications/safeguarding-our-soils-a-strategy-for-england
Future Water – The Government’s water strategy for England (2011)	www.gov.uk/government/publications/future-water-the-government-s-water-strategy-for-england
High Streets and Town Centres in 2030 (2019)	www.publications.parliament.uk/pa/cm201719/cmselect/cmcomloc/1010/report-summary.html

Regional and sub-regional (South Hampshire)

Title	Available from:
PUSH Spatial Position Statement (2016)	www.push.gov.uk/work/planning-and-infrastructure/push-position-statement/
Economic and employment land Evidence Report (2016)	www.push.gov.uk/work/planning-and-infrastructure/push-position-statement/
Partnership for Urban South Hampshire: Economic Development Strategy (2010)	www.push.gov.uk/priorities/policy-and-strategy/
Transforming Solent: Solent Strategic Economic Plan 2014-2020	https://solentlep.org.uk/publications/
Gosport Infrastructure Investment Plan (2019)	https://solentlep.org.uk/publications/
South Hampshire Green Infrastructure Strategy (2017-2034), Partnership for South Hampshire	www.push.gov.uk/work/planning-and-infrastructure/push-position-statement/
The Solent Waders and Brent Goose Strategy (2010) and supporting information	https://solentwbgs.wordpress.com/page-2/
Solent Recreation Mitigation Strategy (2017)	https://solent.birdaware.org/strategy
South East Hampshire: Catchment flood management plan (2009)	www.gov.uk/government/publications/south-east-hampshire-catchment-flood-management-plan
Defra and Environment Agency, River Basin Management Plan South East River Basin District (2015 Update)	www.gov.uk/government/publications/south-east-river-basin-district-river-basin-management-plan
South Inshore and Offshore Marine Plan (2018)	www.gov.uk/government/publications/the-south-marine-plans-documents
North Solent Shoreline Management Plan (2010)	www.northsolentsmp.co.uk/
Objectively Assessed Housing need update (2016)	www.push.gov.uk/work/planning-and-infrastructure/push-position-statement/
South Hampshire Strategic Housing Market Assessment (2014)	www.push.gov.uk/work/planning-and-infrastructure/push-position-statement/
Partnership for Urban South Hampshire:	www.push.gov.uk/work/planning-and-

Title	Available from:
Integrated Water Strategy (2008)	infrastructure/green-infrastructure-flooding-water-management/
Partnership for Urban South Hampshire: Integrated Water Study (2018)	www.push.gov.uk/wp-content/uploads/2018/07/Item-10-Appendix-1-Redacted-Integrated-Water-Management-Study.pdf
Partnership for Urban South Hampshire Strategic Flood Risk Assessment (2007)	www.push.gov.uk/work/infrastructure/push-position-statement/
Partnership for Urban South Hampshire Strategic Flood Risk Assessment Update (2016)	www.push.gov.uk/work/infrastructure/green-infrastructure-flooding-water-management/
River Hamble to Portchester Coastal Flood and Erosion Risk Management Coastal Defence Strategy (2016)	www.coastalpartners.org.uk/project/river-hamble-to-portchester-strategy/
Partnership for Urban South Hampshire South Hampshire Green Infrastructure Strategy (2017-2034)	www.push.gov.uk/work/infrastructure/green-infrastructure-flooding-water-management/
South Hampshire Green Infrastructure Implementation Plan (2019)	www.push.gov.uk/work/infrastructure/green-infrastructure-flooding-water-management/
Partnership for South Hampshire Statement of Common Ground and Spatial Strategy	Work is ongoing and will inform the Gosport Borough Local Plan

Hampshire

Title	Available from:
Hampshire Minerals and Waste Plan (adopted October 2013), Hampshire County Council	www.hants.gov.uk/en/landplanningandenvironment/strategic-planning/hampshire-minerals-waste-plan
Tree Strategy 2020: Hampshire County Council	https://documents.hants.gov.uk/environment/tree-strategy.pdf
Hampshire Integrated Character Assessment (2011)	www.hants.gov.uk/en/landplanningandenvironment/environment/landscape/integratedcharacterassessment
Hampshire Local Transport Plan 2011-31 (reviewed 2013), Hampshire County Council	www.hants.gov.uk/transport/strategies/transportstrategies
Hampshire Strategic Infrastructure Statement (2019), Hampshire County Council	www.hants.gov.uk/en/landplanningandenvironment/strategic-planning/infrastructure-planning
Hampshire Joint Strategic Needs Assessment (2017)	www.hants.gov.uk/socialcareandhealth/publichealth/jsna
Towards a healthier Hampshire: improving the Public's Health 2016-2021	www.hants.gov.uk/socialcareandhealth/publichealth/jsna
Hampshire Biodiversity Partnership: Biodiversity Action Plan for Hampshire (Volume 1 and 2)	www.hants.gov.uk/en/landplanningandenvironment/environment/biodiversity/conserving

Gosport

Title	Available from:
Gosport Borough Local Plan 2011-2029 (adopted October 2015)	www.gosport.gov.uk/localplan2029
Gosport Borough Council Supplementary Planning Documents	www.gosport.gov.uk/article/1240/Supplementary-Planning-Documents-SPD-
Conservation Area Appraisals, Gosport Borough Council	www.gosport.gov.uk/conservation-area-appraisals
Authority Monitoring Report's (2005 to 2020), Gosport Borough Council	www.gosport.gov.uk/amr
Infrastructure Funding Statement 2020, Gosport Borough Council	www.gosport.gov.uk/infrastructure
Infrastructure Delivery Plan's (2014, 2015, 2019), Gosport Borough Council	www.gosport.gov.uk/infrastructure
Infrastructure Assessment Report (2021), Gosport Borough Council	<i>Currently unpublished</i>
Alver Valley Country Park: Strategy (April 2014), Gosport Borough Council	www.gosport.gov.uk/media/1445/Alver-Valley-Country-Park-Strategy-April-2014/pdf/Alver Valley Country Park Strategy April 2014.pdf?m=637111642414300000
Gosport Borough Council Corporate Plan on a page	www.gosport.gov.uk/article/763
Gosport Borough Council: Climate Change Strategy and Action Plan	www.gosport.gov.uk/climatechange
Older Persons Strategy, Gosport Borough Council	www.gosport.gov.uk/article/855/Policies-Strategies-and-Reports
Homeless Strategy Review 2009-2014, Gosport Borough Council	www.gosport.gov.uk/article/855/Policies-Strategies-and-Reports
Gosport Retail, Leisure and Tourism Study (Lambert Smith Hampton, 2019)	www.gosport.gov.uk/gblp2036
Draft Gosport Economic Development Strategy 2021-2031 and evidence base, Gosport Borough Council	www.gosport.gov.uk/article/1963/Gosport-Economic-Development-Strategy-2020-2031
All other evidence studies included in Gosport Borough Local Plan 2036 evidence base to be published at Regulation 18 consultation later in 2021	<i>Currently unpublished</i>
Neighbouring adopted Local Plans/ Core Strategies and Draft Local Plans	<i>Available on Local authority websites</i>

Other

Title	Available from:
Portsmouth Water Resource Management Plan (2019)	www.portsmouthwater.co.uk/news/publications/water-resources-planning/
Southern Water: Water Resource Management Plan 2020-2070 (2019)	www.southernwater.co.uk/our-story/water-resources-planning/water-resources-management-plan-2020-70

March 2021

Sustainability Appraisal Scoping Report

Gosport Borough Council

Town Hall, High Street

Gosport

Hampshire

PO12 1EB

(023) 9254 5461

planning.policy@gosport.gov.uk

www.gosport.gov.uk/planning



GOSPORT
Borough Council