

AECOM

PROJECT
Partnership for South Hampshire Strategic Flood Risk Assessment

CLIENT
Portsmouth City Council on behalf of Gosport Borough Council

CONSULTANT
AECOM Limited
Sunley House
4 Bedford Park
Croydon, CR0 2AP
www.aecom.com

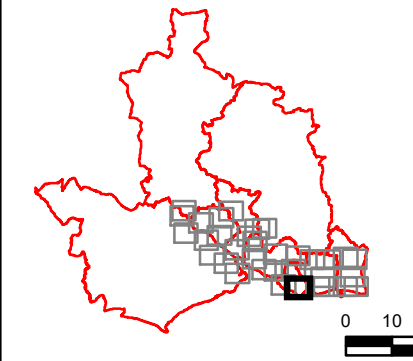
LEGEND

- Local Authority Boundary
- Portsmouth Model Extent
- Gosport Model Extent

Maximum Flood Depth (m): Defended 1 in 200 Year (0.5% AEP) 2122 (Upper End)

- 0.0 - 0.1
- 0.1 - 0.5
- 0.5 - 1.0
- 1.0 - 1.5
- 1.5 - 2.0
- 2.0 - 2.5
- 2.5 - 5.0
- >5.0

OVERVIEW



NOTES

© Environment Agency copyright and/or database right 2022.
Reproduced from Ordnance Survey digital map data © Crown copyright 2022. All rights reserved. Licence number 0100031673.

This map is intended to provide a strategic overview and should not be used to assess individual properties. Refer to the accompanying SFRA Report for details of the datasets and purpose of their use.

ISSUE PURPOSE

For Information

PROJECT NUMBER

60653132

FIGURE TITLE

Maximum Flood Depth: Defended 1 in 200 Year (0.5% AEP) 2122 (Upper End)
Sheet 1 of 3

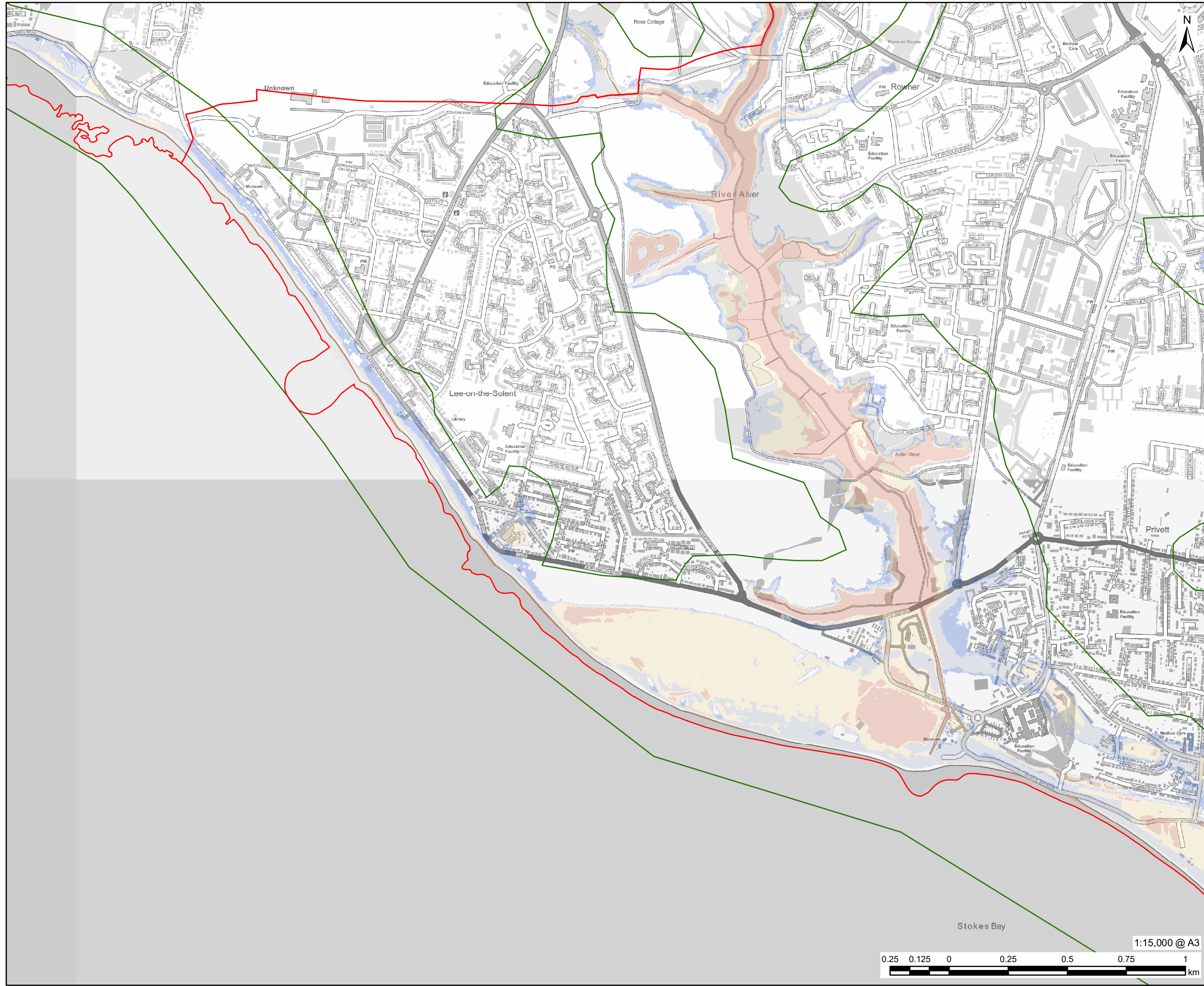
FIGURE NUMBER

Figure 6

1:15,000 @ A3



This drawing has been prepared for the use of AECOM's client. It may not be used, modified, reproduced or relied upon by third parties, except as agreed by AECOM or as required by law. AECOM accepts no responsibility, and denies any liability whatsoever, to any party that uses or relies on this drawing without AECOM's express written consent. Do not scale this document. All measurements must be obtained from the stated dimensions.



PROJECT
Partnership for South Hampshire
Strategic Flood Risk Assessment

CLIENT
Portsmouth City Council on behalf of
Gosport Borough Council

CONSULTANT
AECOM Limited
Sunley House
4 Bedford Park
Croydon, CR0 2AP
www.aecom.com

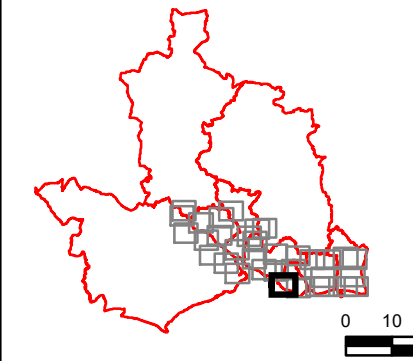
LEGEND

- Local Authority Boundary
- Gosport Model Extent

**Maximum Flood Depth (m): Defended
1 in 200 Year (0.5% AEP) 2122 (Upper
End)**

0.0 - 0.1
0.1 - 0.5
0.5 - 1.0
1.0 - 1.5
1.5 - 2.0
2.0 - 2.5
2.5 - 5.0
>5.0

OVERVIEW



NOTES
© Environment Agency copyright and/or
database right 2022.
Reproduced from Ordnance Survey digital
map data © Crown copyright 2022. All rights
reserved. Licence number 0100031673.

This map is intended to provide a strategic
overview and should not be used to assess
individual properties. Refer to the
accompanying SFRA Report for details of the
datasets and purpose of their use.

ISSUE PURPOSE

For Information

PROJECT NUMBER

60653132

FIGURE TITLE

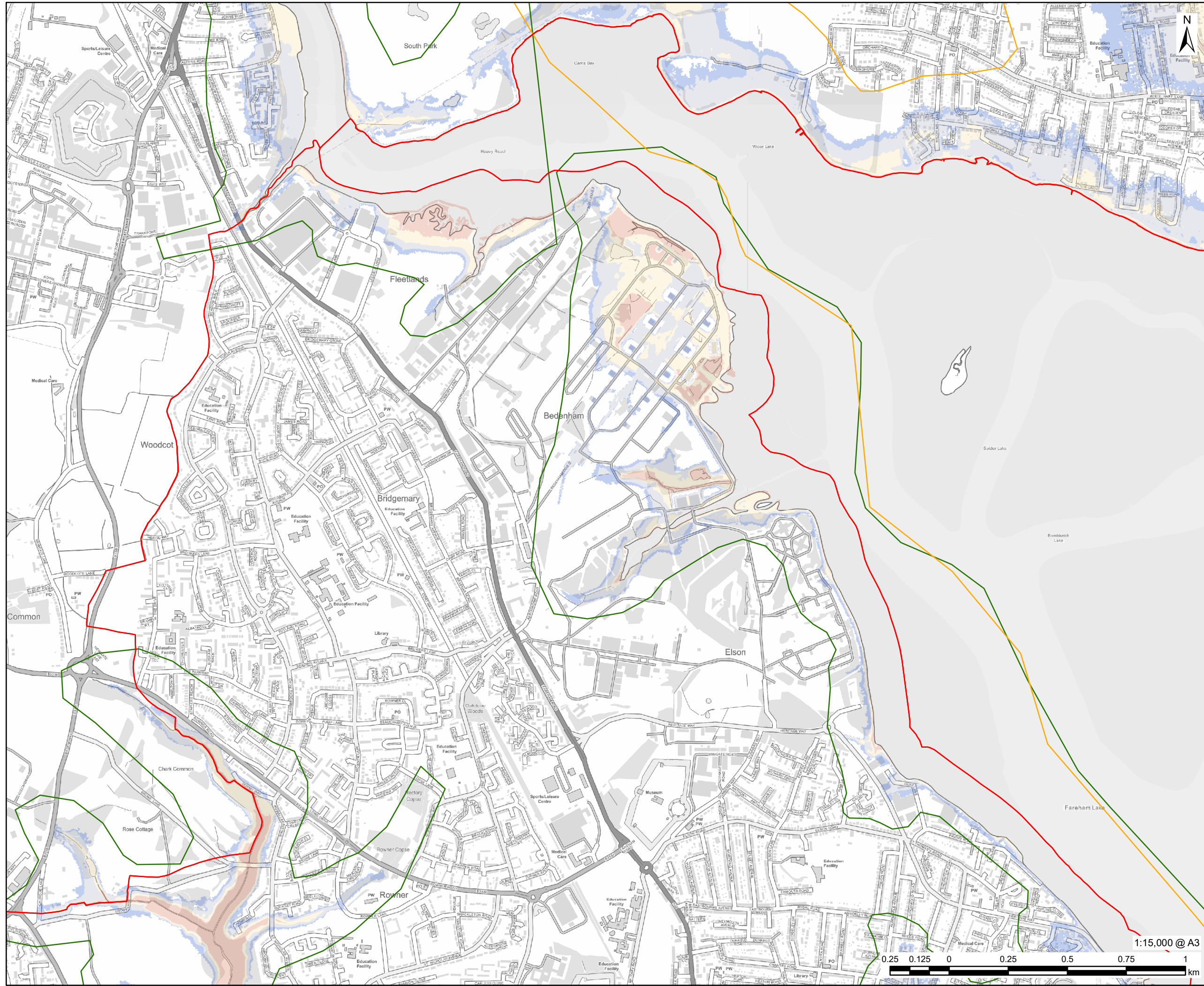
Maximum Flood Depth: Defended 1 in
200 Year (0.5% AEP) 2122 (Upper End)
Sheet 2 of 3

FIGURE NUMBER

Figure 6



The drawing has been prepared for the use of AECOM's client. It may not be used, modified, reproduced or relied upon by third parties, except as agreed by AECOM or as required by law. AECOM accepts no responsibility, and denies any liability whatsoever, to any party that uses or relies on this drawing without AECOM's express written consent. Do not scale this document. All measurements must be obtained from the stated dimensions.



PROJECT
Partnership for South Hampshire Strategic Flood Risk Assessment

CLIENT
Portsmouth City Council on behalf of Gosport Borough Council

CONSULTANT
AECOM Limited
Sunley House
4 Bedford Park
Croydon, CR0 2AP
www.aecom.com

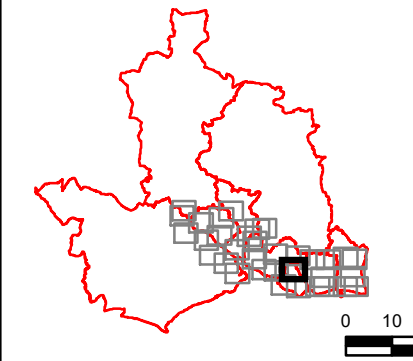
LEGEND

- Local Authority Boundary
- Portsmouth Model Extent
- Gosport Model Extent

Maximum Flood Depth (m): Defended 1 in 200 Year (0.5% AEP) 2122 (Upper End)

0.0 - 0.1
0.1 - 0.5
0.5 - 1.0
1.0 - 1.5
1.5 - 2.0
2.0 - 2.5
2.5 - 5.0
>5.0

OVERVIEW



NOTES

© Environment Agency copyright and/or database right 2022.
Reproduced from Ordnance Survey digital map data © Crown copyright 2022. All rights reserved. Licence number 0100031673.

This map is intended to provide a strategic overview and should not be used to assess individual properties. Refer to the accompanying SFRA Report for details of the datasets and purpose of their use.

ISSUE PURPOSE

For Information

PROJECT NUMBER

60653132

FIGURE TITLE

Maximum Flood Depth: Defended 1 in 200 Year (0.5% AEP) 2122 (Upper End)
Sheet 3 of 3

FIGURE NUMBER

Figure 6



This drawing has been prepared for the use of AECOM's client. It may not be used, modified, reproduced or relied upon by third parties, except as agreed by AECOM or as required by law. AECOM accepts no responsibility, and denies any liability whatsoever, to any party that uses or relies on this drawing without AECOM's express written consent. Do not scale this document. All measurements must be obtained from the stated dimensions.